



HycO Telescopic Cylinders & Service Parts

Effective January 1, 2009



Part Number Cross Reference by Size

Single Acting Cylinders

	70821-63-91.88	70817-73-114D	70000-814-140E
	70811-63-92	70016-73-120D	70000-814-147D
	70347-63-108E	70016-73-120E	70000-814-155D
	70050-63-111T	70195-73-120D	70000-814-172DE
4" DIAMETER	70347-63-111D	70493-73-124.25	70022-814-172DE
<u>2 Stage</u>	70021-63-120D	70175-73-129H	70000-814-191D
70564-42-67.50	70021-63-120E	70195-73-130E	<u>5 Stage</u>
70049-42-90T	70050-63-120T	70806-73-130T	70000-815-160D
70576-42-90T	70251-63-120	70818-73-132T	70000-815-170D
70576-42-98T	70339-63-120	70048-73-134.81D	70000-815-180D
	70347-63-120D	70616-73-136.13	70283-815-180D
	70347-63-120DE	70016-73-140D	70802-815-180
5" DIAMETER	70347-63-120E	70016-73-140E	70000-815-191D
<u>3 Stage</u>	70807-63-120	70195-73-140E	70803-815-200T
70057-53-68	70449-63-123	<u>4 Stage</u>	70000-815-210D
70831-53-74	70251-63-126	70822-74-27T	70022-815-210D
70039-53-78	70339-63-126	70016-74-120D	70000-815-210E
70820-53-81	70347-63-126E	70016-74-120E	70020-815-210T
70512-53-82.81	70500-63-126	70815-74-127E	70803-815-220T
70057-53-84	70347-63-130E	70016-74-135E	70000-815-235D
70057-53-90	70021-63-132E	70016-74-135D	70022-815-235D
70072-53-96T	70050-63-132T	70048-74-135D	70022-815-235DE
70252-53-99	70347-63-132D	70048-74-135E	70060-815-235T
70384-53-99	70251-63-138	70195-74-135D	70541-815-240D
70252-53-105	70339-63-138	70195-74-135E	70000-815-250D
70384-53-105	70050-63-140T	70387-74-135D	70022-815-250DE
70841-53-105T	70573-63-140T	70387-74-135E	70060-815-250T
70072-53-120T	70050-63-150T	70521-74-136	70000-815-265D
70252-53-120	70251-63-162	70018-74-138DE	70060-815-265T
70384-53-120	70339-63-162	70016-74-140D	70541-815-265D
70252-53-123	<u>4 Stage</u>	70016-74-140E	70022-815-280D
70384-53-123	70812-64-100	70843-74-140D	70060-815-280T
70679-53-123E	70470-64-132	70595-74-154T	
70828-53-123	70805-64-134	70826-74-154T	<u>9 3/8" DIAMETER</u>
70804-53-140T	70347-64-136D	70016-74-156D	<u>5 Stage</u>
	70050-64-140T	70016-74-156DE	70025-935-220D
6" DIAMETER	70470-64-156	70016-74-156E	70346-935-220D
<u>2 Stage</u>	70805-64-156	70195-74-156D	70203-935-235D
70096-62-69D	70050-64-160T	70504-74-162	70338-935-235D
70347-62-70D	70021-64-164E	70195-74-167D	70338-935-235DE
70347-62-74D	70833-64-168E	70595-74-172T	70025-935-250D
<u>3 Stage</u>		70826-74-172T	70203-935-250D
70347-63-40D		70016-74-180DE	70125-935-265DE
70347-63-77D	7" DIAMETER		70203-935-265D
70816-63-79	<u>1 Stage</u>	<u>5 Stage</u>	70025-935-280DE
70816-63-79.38	70016-71-49H	70461-75-70D	70125-935-280D
70832-63-80	<u>3 Stage</u>		70125-935-280D
70021-63-84D	70651-73-81 D	<u>8 1/8" DIAMETER</u>	70320-935-280DE
70816-63-91.88	70195-73-108D	<u>4 Stage</u>	70338-935-220D
	70195-73-110D	70000-814-140DE	

Double Acting Cylinders

	8 1/8" DIAMETER
	<u>4 Stage</u>
	20147-814-135.25
6" DIAMETER	<u>9 3/8" DIAMETER</u>
<u>2 Stage</u>	<u>4 Stage</u>
20133-62-142	20120-914-156
20133-62-171	<u>5 Stage</u>
20133-62-186	20258-915-160
20133-62-210	20078-915-460
20133-62-234	<u>6 Stage</u>
<u>3 Stage</u>	20032-916-198
20192-63-93	20095-916-417
20051-63-96	20185-916-440
20191-63-108	20185-916-456
20092-63-115	
20092-63-127	<u>9 3/8" DIAMETER</u>
20189-63-132	<u>4 Stage</u>
20092-63-145	20433-934-176.12
<u>4 Stage</u>	
20099-64-132	
20155-64-134.86	
20099-64-152	
7" DIAMETER	
<u>3 Stage</u>	
20117-73-156.50	
<u>4 Stage</u>	
20047-74-131.50	
20214-74-144	
20190-74-160	
8" DIAMETER	
<u>3 Stage</u>	
20119-83-156.56	
20118-83-177	
<u>4 Stage</u>	
20059-84-144.75	
20059-84-178.38	
<u>5 Stage</u>	
20057-85-300	
20079-85-348	
20057-85-350	
20170-85-378	
20070-85-380	
20076-85-384T	
<u>6 Stage</u>	
20052-86-177	

Hyco Cylinder Identification

Identify Hyco Cylinders by locating the serial number. It is stamped into the base of the cylinder body or is just above the cylinder port.

The serial number is the first five to eight digits of the number. The last three or four digits indicate the date of manufacture.

Example: 12345 10 81
 | | |
 Serial Number Month Year

Hyco keeps a record of all Cylinders.

Series 70 Single Acting

Seal Kit – seal kit consists of wiper seal, top guide ring, U-cupped seal, spiral retaining ring, and bottom guide ring.

Wiper – dual lip wiper, K series

Seal – Lip seal, Optional pack set available

Retaining Ring – spiral.

Top & Bottom Guide Ring – glass filled nylon.

30000 Series Single Acting Mfg. After 8/81

Packing – pack set consists of adjustable vee packing. The plungers and cylinder tube assembly have a "step" on internal diameter above retaining ring groove. As a result packing surface is .025" over the plunger bore diameter. (See Diagram)

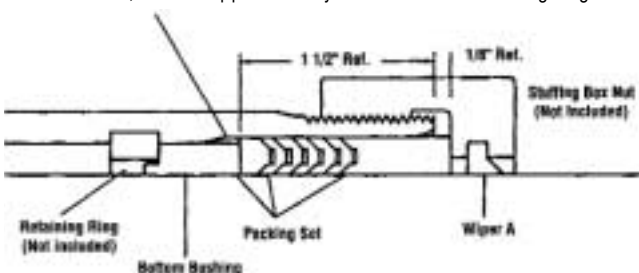
Wiper – dual lip wiper.

Bearings – bearings are glass filled nylon and teflon lubricated

Retainer Ring – 3/8" wide spring steel.

Piston Wear Ring – two replaceable 1/2" wide wear rings. Largest plunger that passes over cylinder port requires metallic wear ring. (Cylinders manufactured after 3/84 may use only one wear ring per stage.)

New Pack Set Bore Design can be identified by the step in the bore diameter, located approximately 1/2" above the retaining ring.



30000 Series Single Acting Mfg. Prior to 8/81

Packing – pack set consists of adjustable vee packing. Does not have "step" in bore above retaining ring groove.

Wiper – dual lip wiper.

Bearings – same as 30000 series above.

Retainer Ring – same as 30000 series above.

Wear Ring – same as 30000 series above.

20000 Series Double Acting

Packing – pack set consists of adjustable vee packing. Does not have "step" in bore above retaining ring groove.

Wiper – dual lip wiper, K series

Bearings – Bottom bearing is glass filled nylon, and is stepped to fit within retainer ring. Top bearing is 3/4" long, and bronze or glass filled nylon.

Retainer Ring – 3/8" wide spring steel.

Piston Assembly – piston is welded onto stage and has one or two replaceable 1/2" nylon wear rings and one or two 1/2" cast iron piston rings.

10000 Series Single Acting

Packing – pack set consists of shim adjustable vee packing.

Wiper – glass filled nylon wiper.

Bearings – same as 30000 series above.

Retainer Ring – same as 30000 series above.

Piston Wear Ring – same as 30000 series above.

9000 Series Double Acting

Packing – pack set consists of adjustable vee packing.

Wiper- dual lip wiper.

Bearings – bearings are 3/4" long bronze bushings. Lower bearing is retained by two Spiralox snap rings.

Retainer Ring – 1/8" wide Spiralox snap ring.

Piston Assembly – piston is steel and threads onto bottom of plunger tube. Piston is sealed with an O-ring between plunger and piston. Piston seal is cast iron piston ring 1/4" wide. Piston bearings are two replaceable 1/2" nylon guide rings.

900-2000 Series Single Acting

Packing – pack set consists of adjustable vee packing.

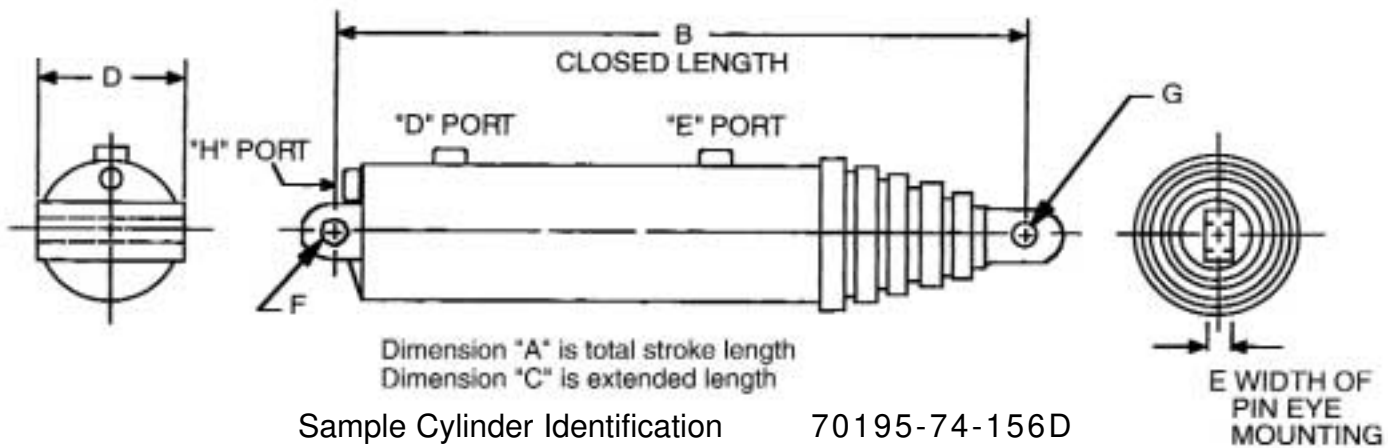
Wiper – dual lip wiper.

Bearings – bearings are 3/4" long bronze bushings.

Retainer Ring – 1/8" wide Spiralox snap ring.

Piston Assembly – bronze overlay brazed on steel. These are an integral part of the piston and are not replaceable.

HYCO DIMENSIONAL DATA
 Series 70 – Single Action Cylinders



Sample Cylinder Identification 70195-74-156D

PART NO. FIRST PLUNGER DIA. PORT LOCATION
 (NOTE - EACH SMALLER PLUNGER DIA. TOTAL STROKE
 DECREASES IN 1" INCREMENTS) NO. OF PLUNGERS

NOTE: "D", "E" and "H" suffix in part no. represents a specific port location.
 For dimensional data, consult factory.

NOTE: A "T" suffix in Part No. represents Trunnion Mount.

For price and delivery on models or sizes not listed, please contact factory at 1.800.544.0279.

Port locations other than those listed may be available upon request.

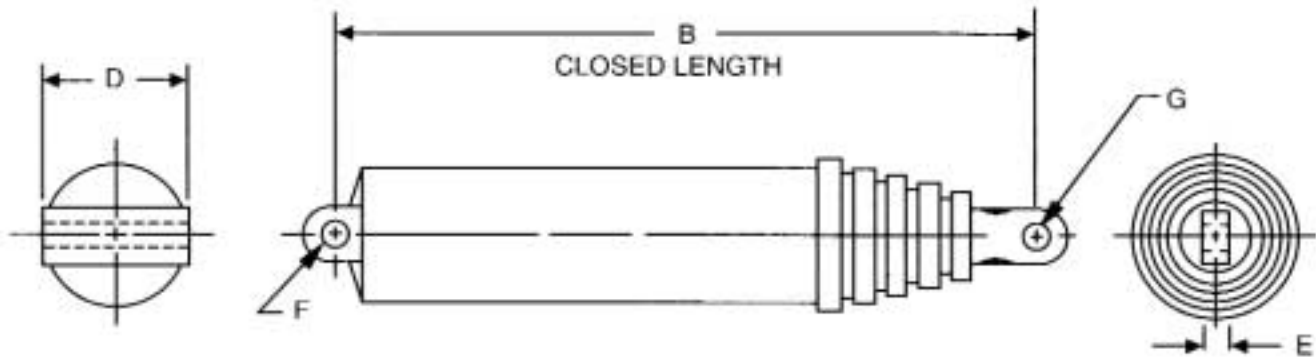
Part Number	A	B	C	D	E	F	G
70000-814-140DE	140	52	192	9.5	2	2.12	2.06
70000-814-140E	140	52	192	9.5	2	2.12	2.06
70000-814-147D	147	53.75	200.75	9.5	2	2.12	2.06
70000-814-155D	155	55.75	210.75	9.5	2	2.12	2.06
70000-814-191D	191	64.75	255.75	9.5	2	2.12	2.06
70000-814-172DE	172	60	232	9.5	2	2.12	2.06
70000-815-160D	159.25	50	209.25	9.5	2	2.12	2.06
70000-815-170D	169.25	52	221.25	9.5	2	2.12	2.06
70000-815-180D	179.25	54	233.25	9.5	2	2.12	2.06
70000-815-191D	190.25	56.2	246.45	9.5	2	2.12	2.06
70000-815-210D	209.25	60	269.25	9.5	2	2.12	2.06
70000-815-235D	235	65	299.25	9.5	2	2.12	2.06
70000-815-250D	250	68	317.25	9.5	2	2.12	2.06
70000-815-265D	265	71	335.25	9.5	2	2.12	2.06
70000-815-280DE	280	74	353.25	9.5	2	2.12	2.06
70016-73-120D	120	53.5	173.41	9.5	2	2.12	2.06
70016-73-120E	119.88	53.5	173.38	9.5	2	2.12	2.06
70016-73-130E	129.88	56.83	186.71	9.5	2	2.12	2.06
70016-73-140D	139.88	60.16	200.04	9.5	2	2.12	2.06
70016-73-140E	139.88	60.16	200.04	9.5	2	2.12	2.06

Part Number	A	B	C	D	E	F	G
70016-74-120D	120	44.75	164.75	9.5	2	2.12	2.06
70016-74-120E	120	44.75	164.75	9.5	2	2.12	2.06
70016-74-135D	135	48.5	183.5	9.5	2	2.12	2.06
70016-74-140D	140	49.75	189.75	9.5	2	2.12	2.06
70016-74-140E	140	49.75	189.75	9.5	2	2.12	2.06
70016-74-156D	156	53.75	209.75	9.5	2	2.12	2.06
70016-74-156D	156	53.75	209.75	9.5	2	2.12	2.06
70016-74-156E	156	53.75	209.75	9.5	2	2.12	2.06
70016-74-180DE	180	59.75	239.75	9.5	2	2.12	2.06
70018-74-138DE	138	49.25	187.25	8.25	1.5	2.12	2.06
70020-815-210T	210	60.48	270.48	Trunnion Mt.	3	2.25 Dia x 16.50	2.06
70021-63-120D	120	53.46	173.46	9.5	2	2.12	2.06
70021-63-120E	120	53.46	173.46	9.5	2	2.12	2.06
70021-63-132E	132	57.46	189.46	9.5	2	2.12	2.06
70021-63-84D	84	41.46	125.46	9.5	2	2.12	2.06
70021-64-164E	164	55.78	219.78	9.5	1.5	2.12	2.06
70022-814-172DE	172	60	232	10.25	2	2.12	2.06
70022-815-210D	209.88	60.16	270.03	10.25	2	2.12	2.06
70022-815-235D	234.88	65.16	300.03	10.25	2	2.12	2.06
70022-815-235DE	234.88	65.16	300.03	10.25	2	2.12	2.06
70022-815-250DE	249.88	68.16	318.03	10.25	2	2.12	2.06
70022-815-280DE	279.88	74.16	354.03	10.25	2	2.12	2.06
70025-935-220D	220	62.66	82.66	12	3	2.12	2.06
70025-935-250D	250	68.66	318.66	12	3	2.12	2.06
70025-935-280DE	280	74.66	354.66	12	3	2.12	2.06
70039-53-78	78	38.6	116.6	6.25	2.97	3.62	1.56
70048-74-135D	135	48.5	183.5	8.12	1.5	2	1.69
70048-74-135E	135	48.5	183.5	8.12	1.5	2	1.69
70049-42-90T	90	56.44	146.44	Trunnion Mt.	2.96	1.25 Dia x 7.50	1.28
70050-63-111T	111	50.72	161.72	Trunnion Mt.	3.96	1.75 Dia x 14.38	1.56
70050-63-120T	120	53.72	173.72	Trunnion Mt.	3.96	1.75 Dia x 14.38	1.56
70050-63-132T	132	57.72	189.72	Trunnion Mt.	3.96	1.75 Dia x 14.38	1.56
70050-63-140T	140	60.39	200.39	Trunnion Mt.	3.94	1.75 Dia x 14.38	1.56
70050-63-150T	150	63.72	213.72	Trunnion Mt.	3.96	1.75 Dia x 14.38	1.56
70050-64-140T	140	49.98	189.98	Trunnion Mt.	2.96	1.75 Dia x 14.38	1.56
70050-64-160T	160	54.98	214.98	Trunnion Mt.	2.96	1.75 Dia x 14.38	1.56
70057-53-68	68	34.59	102.34	6.62	1.5	2.06	1.56
70057-53-84	83.75	39.92	123.67	6.62	1.5	2.06	1.56
70057-53-90	89.75	41.92	131.67	6.62	1.5	2.06	1.56

Part Number	A	B	C	D	E	F	G	
70060-815-235T	235	65.48	300.48	Trunnion Mt.	3	2.25 Dia x 15.50	2.06	
70060-815-250T	250	68.48	318.48	Trunnion Mt.	3	2.25 Dia x 15.50	2.06	
70060-815-265T	265	71.48	336.48	Trunnion Mt.	3	2.25 Dia x 15.50	2.06	
70060-815-280T	280	74.48	354.48	Trunnion Mt.	3	2.25 Dia x 15.50	2.06	
70072-53-120T	120	54.06	174.06	Trunnion Mt.	2.96	1.75 Dia x 14.38	1.56	
70072-53-96T	96	46.06	142.06	Trunnion Mt.	2.96	1.75 Dia x 14.38	1.56	
70096-62-69D	69	47.09	115.97	1.5	1.5	1.56	1.5	
70125-935-265DE	265	75.51	340.51	12	2	2.12	2.06	
70125-935-280D	280	78.51	358.51	12	2	2.12	2.06	
70195-73-108D	107.88	49.5	157.38	8.62	2	2.12	2.06	
70195-73-110D	110	50.17	160.05	8.62	2	2.12	2.06	
70195-73-120D	119.88	53.5	173.38	8.62	2	2.12	2.06	
70195-73-130E	129.88	56.83	186.71	8.62	2	2.12	2.06	
70195-73-140E	139.88	60.17	200.05	8.62	2	2.12	2.06	
70195-74-135D	135	48.5	183.5	8.62	2	2.12	2.06	
70195-74-135E	135	48.5	183.5	8.62	2	2.12	2.06	
70195-74-156D	156	53.75	209.75	8.62	2	2.12	2.06	
70195-74-167D	167	56.5	223.5	8.62	2	2.12	2.06	
70203-935-235D	235	66.16	301.16	12	3	3.12	2.06	
70203-935-250D	250	69.16	319.16	12	3	3.12	2.06	
70203-935-265D	265	72.16	337.16	12	3	3.12	2.06	
70251-63-120	120	53.4	173.4	7.25	1.5	2.44	2.19	
70251-63-126	126	55.4	181.4	7.25	1.5	2.44	2.19	
70251-63-138	138	59.4	197.4	7.25	1.5	2.44	2.19	
70251-63-162	162	67.4	229.4	7.25	1.5	2.44	2.19	
70252-53-105	105	48.41	153.41	7.75	1.5	2.06	1.81	
70252-53-120	120	53.41	173.41	7.75	1.5	2.06	1.81	
70252-53-123	123	54.41	177.41	7.75	1.5	2.06	1.81	
70252-53-99	99	46.41	145.41	7.75	1.5	2.06	1.81	
70338-935-220D	220	62.41	282.41	12	2	2.12	2.06	
70338-935-235D	235	65.41	300.41	12	2	2.12	2.06	
70338-935-235DE	235	65.41	300.41	12	2	2.12	2.06	
70338-935-250DE	250	68.41	318.41	12	2	2.12	2.06	
70339-63-120	120	53.4	173.4	8	1.5	2.44	2.19	
70339-63-126	126	55.4	181.4	8	1.5	2.44	2.19	
70339-63-138	138	59.4	197.4	8	1.5	2.44	2.19	
70339-63-162	162	67.4	229.4	8	1.5	2.44	2.19	
70346-935-220D	220	62.66	282.66	9.5	2	2.12	2.06	
70347-62-70D	70	47.25	117.25	7.25	2	2.12	2.06	
70347-62-74D	74	49.25	123.25	7.25	2	2.12	2.06	
70347-63-108E	108	49.4	157.4	7.25	2	2.12	2.06	
70347-63-111D	111	50.4	161.4	7.25	2	2.12	2.06	
70347-63-120D	120	53.4	173.4	7.25	2	2.12	2.06	

Part Number	A	B	C	D	E	F	G	
70347-63-120DE	120	53.4	173.4	7.25	2	2.12	2.06	
70347-63-120E	120	53.4	173.4	7.25	2	2.12	2.06	
70347-63-126E	126	55.4	181.4	7.25	2	2.12	2.06	
70347-63-130E	130	56.73	188.73	7.25	2	2.12	2.06	
70347-63-132D	132	57.4	189.4	7.25	2	2.12	2.06	
70347-63-40D	40	26.73	66.73	7.25	2	2.12	2.06	
70347-63-77D	77	39.06	116.06	7.25	2	2.12	2.06	
70347-64-136DE	136	48.66	184.66	7.25	1.5	2.12	2.06	
70384-53-99	99	46.41	145.41	7.75	1.5	2.06	1.81	
70384-53-105	105	48.41	153.41	7.75	1.5	2.06	1.81	
70384-53-120	120	53.41	173.41	7.75	1.5	2.06	1.81	
70384-53-123	123	54.41	177.41	7.75	1.5	2.06	1.81	
70387-74-135D	135	48.5	183.5	8.62	2	2.12	2.06	
70387-74-135E	135	48.5	183.5	8.62	2	2.12	2.06	
70470-64-132	132	47.19	179.19	8	2.69	1.81	1.56	
70470-64-156	156	53.19	209.19	8	2.69	1.81	1.56	
70493-73-124.25	124.25	55.31	179.56	6.75	2	2.12	1.69	
70500-63-126	126	55.25	181.25	6.75	2	2.12	1.69	
70504-74-162	162	55.31	217.31	6.75	2	2.12	1.69	
70521-74-136	136	48.75	184.75	6.75	2	2.12	1.69	
70573-63-140T	140	60.39	200.39	Trunnion Mt.	3.96	1.75 Dia x 14.38	1.56	
70595-74-154T	154	53.84	207.84	Trunnion Mt.	3.96	1.75 Dia x 14.38	1.56	
70595-74-172T	172	58.34	230.34	Trunnion Mt.	3.96	1.75 Dia x 14.38	1.56	
70616-73-136.13	136.13	60.94	195	2.75	2	2.12	1.69	
70803-815-200T	200	55	254.75	Trunnion Mt.	3	2.25 Dia x 15.50	2.06	
70803-815-220T	220	59	278.75	Trunnion Mt.	3	2.25 Dia x 15.50	2.06	
70804-53-140T	140	60.73	200.73	Trunnion Mt.	2.96	1.75 Dia x 14.38	1.56	
70805-64-134	134	46	180	7.5	2.75	1.78	1.56	
70805-64-156	156	51.5	207.5	7.5	2.75	1.78	1.56	
70807-63-120	120	55.41	175.41	7.25	1.5	2.44	2.19	
70815-74-127E	127	48.5	174.94	8.62	2	2.12	2.06	
70816-63-79	79	40	119	6.88	2	2.06	2.06	
70816-63-91.88	91.88	45	136.88	6.88	2	2.06	2.06	
70822-74-27T	27	18.58	45.58	Trunnion Mt.	2	2.00 Dia x 11.82	2.06	
70826-74-154T	154	53.84	207.84	Trunnion Mt.	3.96	1.75 Dia x 14.38	1.56	
70826-74-172T	172	58.34	230.34	Trunnion Mt.	3.96	1.75 Dia x 14.38	1.56	

HYCO DIMENSIONAL DATA
20000 – Double Acting Cylinders



Dimension "A" is total stroke length
Dimension "C" is extended length

Sample Cylinder Identification

20000-85-250

PART NO.
FIRST PLUNGER DIA.

TOTAL STROKE
NO. OF PLUNGERS

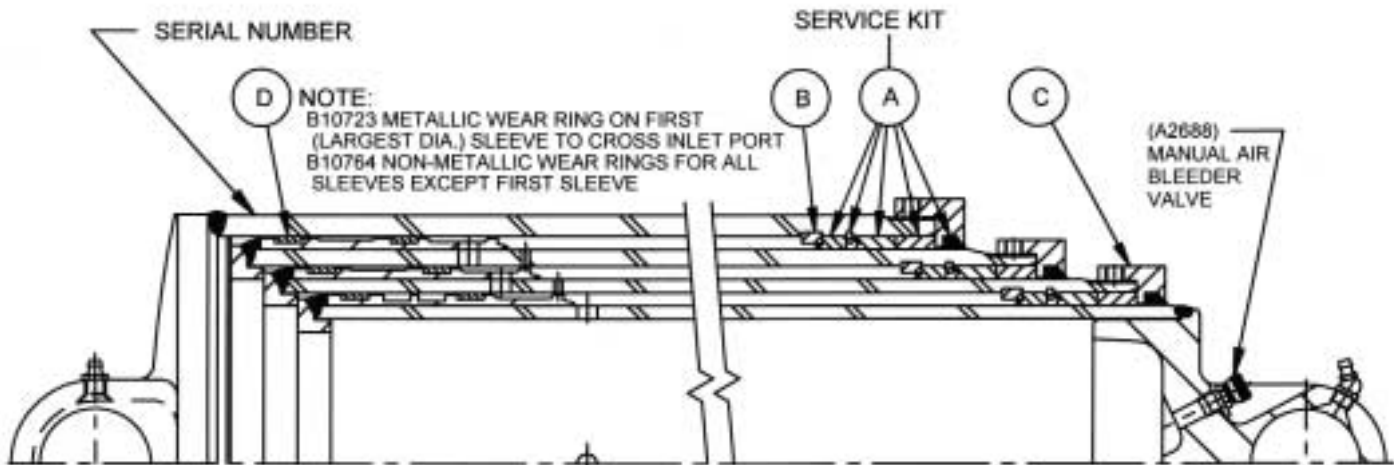
NOTE: A "T" suffix in Part No. represents Trunnion Mount.

For price and delivery on models or sizes not listed, please contact factory at 1.800.544.0279.

Part Number	A	B	C	D	E	F	G	
20032-916-198	198	57.23	255.23	2	2	2.03	2.03	
20047-74-131.50	131.5	53.38	184.88	1.5	1.5	1.28	1.28	
20051-63-96	96	52.43	148.43	1.5	1.5	1.28	1.28	
20052-86-177	177	53.58	230.38	1.5	1.5	1.28	1.28	
20057-85-300	300	87.25	387.25	1.75	2	2	2.06	
20057-85-350	350	97.25	447.25	1.75	2	2	2.06	
20059-84-144.75	144.75	64.75	209.5	2	2	1.77	N/A	
20070-85-380	380	101.16	481.16	9.5	2	2	2.06	
20076-85-384T	384	103	487	Trunnion Mt.	2	3.00 Dia x 46.25	1.5	
20078-915-460	460	124.5	584.5	1.75	2	2	2.19	
20079-85-348	348	99.88	447.88	2	2	2	2.19	
20092-63-115	115	52.33	167.33	Trunnion Mt.	3.5	2.00 Dia x 9.38	1.52	
20092-63-145	145	62.33	207.33	Trunnion Mt.	3.5	2.00 Dia x 9.38	1.52	
20095-916-417	417	96.5	513.5	Trunnion Mt.	2	3.00Dia x 32.00	2.06	

Part Number	A	B	C	D	E	F	G
20099-64-132	132	50	182	2	2.25	1.33	1.53
20099-64-152	152	55	207	2	2.25	1.33	1.53
20117-73-156.50	156.5	79	235.5	N/A	N/A	N/A	N/A
20118-83-177	177	84.88	261.88	N/A	N/A	N/A	N/A
20119-83-156.56	156.56	77	233.56	N/A	N/A	N/A	N/A
20120-914-156	156	66.5	222.5	2.75	2.75	2.31	2.31
20133-62-186	186	117.38	303.38	Trunnion Mt.	4	1.56 Dia x 60.38	1.53
20133-62-210	210	129.38	339.38	Trunnion Mt.	4	1.56 Dia x 60.38	1.53
20133-62-234	234	141.38	375.38	Trunnion Mt.	4	1.56 Dia x 60.38	1.53
20147-814-135.25	135.25	61	196.25	2	2	2.02	2.02
20170-85-378	378	104.75	482.75	2	2	2.12	2.06
20185-916-440	440	100.33	540.33	Trunnion Mt.	2	3.00 Dia x 51.00	2.06
20185-916-456	456	102.99	558.99	Trunnion Mt.	2	3.00 Dia x 51.00	2.06
20189-63-132	132	62.38	194.38	7.12	3.88	1.78	N/A
20190-74-160	160	62.38	222.38	7	N/A	N/A	N/A
20191-63-108	108	50.75	158.75	7.12	N/A	1.78	N/A
20192-63-93	93	50.75	143.75	7.12	N/A	1.78	N/A
20214-74-144	144	56.5	200.5	8.25	4	3	2.06
20258-915-160	160	61	221	2	2	2.02	2.02
20433-934-176.12	176.12	69.12	245.25	3	3	2.52	N/A

Series 70 – Service Parts



Items

- A – Service Kits
- B – Retaining Rings
- C – Retaining Glands
- D – Wear Rings - Metallic/Non-Metallic

Part Number	Description
* Service Kits	
034-00070-00938	9.38 Service Kit
034-00070-00812	8.12 Service Kit
034-00070-00700	7.00 Service Kit
034-00070-00600	6.00 Service Kit
034-00070-00500	5.00 Service Kit
034-00070-00400	4.00 Service Kit
034-00070-00300	3.00 Service Kit
** Optional Adj. Packing Sets	
034-00072-00938	9.38 Service Kit, Packing Set
034-00072-00812	8.12 Service Kit, Packing Set
034-00072-00700	7.00 Service Kit, Packing Set
034-00072-00600	6.00 Service Kit, Packing Set
034-00072-00500	5.00 Service Kit, Packing Set
034-00072-00400	4.00 Service Kit, Packing Set
034-00072-00300	3.00 Service Kit, Packing Set

* Service kit includes lip seal, "K" series wiper, old style "AN" wiper, top and bottom guide rings and spiral retaining ring.

** Optional adjustable pack kit includes v-pack set, "K" series wiper, old style "AN" wiper top and bottom guide rings and spiral retaining ring.

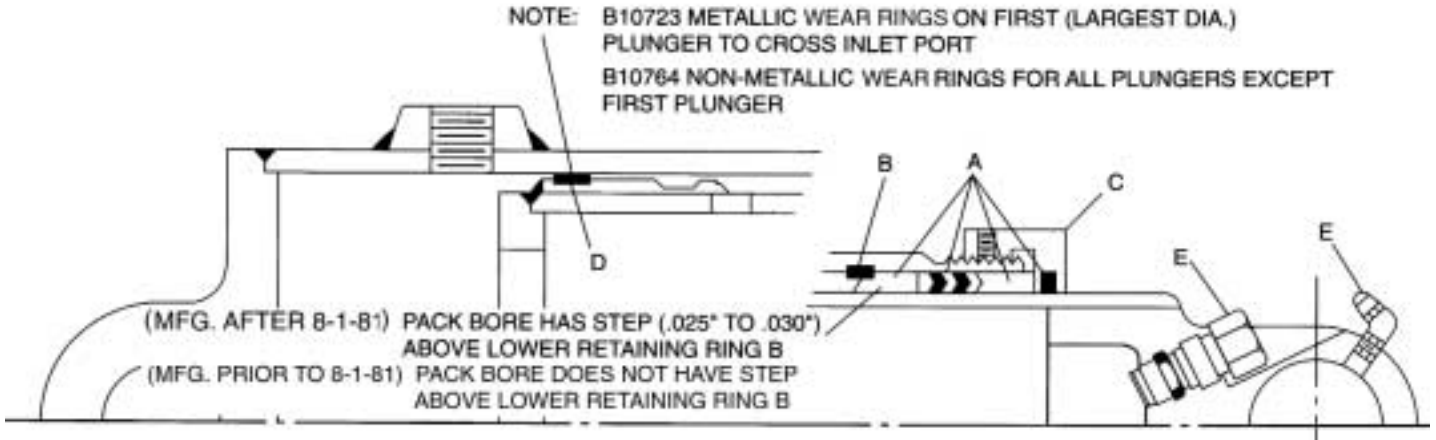
NOTE: Above kits also apply to 60000 series cylinders.

When ordering cylinder tube assembly or sleeve tube assembly, reference the cylinder model number and/or serial number.

Series 70 – Service Parts (Continued)

Part Number	Description
B – Retaining Rings	
B9971-00988	9.38 Retaining Ring
B9971-00862	8.12 Retaining Ring
B9971-00750	7.00 Retaining Ring
B9971-00650	6.00 Retaining Ring
B9971-00550	5.00 Retaining Ring
083-50002-00450	4.00 Retaining Ring
083-50002-00350	3.00 Retaining Ring
C – Retaining Glands	
011-11002-00125	9.38 Retaining Gland 10.75-12 Thread
011-93002-00125	8.12 Retaining Gland 9.31-12 Thread
011-79007-00125	7.00 Retaining Gland 7.94-12 Thread
011-69005-00125	6.00 Retaining Gland 6.94-12 Thread
011-59006-00125	5.00 Retaining Gland 5.94-12 Thread
011-49007-00125	4.00 Retaining Gland 4.94-12 Thread
011-39005-00125	3.00 Retaining Gland 3.94-12 Thread
D – Wear Rings	
B10723-00938	9.38 Wear Ring - Metallic
B10723-00812	8.12 Wear Ring - Metallic
B10723-00700	7.00 Wear Ring - Metallic
B10723-00600	6.00 Wear Ring - Metallic
B10723-00500	5.00 Wear Ring - Metallic
B10723-00400	4.00 Wear Ring - Metallic
B10764-00938	9.38 Wear Ring - Non-Metallic
B10764-00812	8.12 Wear Ring - Non-Metallic
B10764-00700	7.00 Wear Ring - Non-Metallic
B10764-00600	6.00 Wear Ring - Non-Metallic
B10764-00500	5.00 Wear Ring - Non-Metallic
B10764-00400	4.00 Wear Ring - Non-Metallic
B10764-00300	3.00 Wear Ring - Non-Metallic
Accessories	
RV101	Cylinder Pressure Protection Valve
A2688	Manual Bleeder Valve
A2689	Grease Fitting

30000 Series – Service Parts (Manufactured after August 1, 1981)



Items

- | | | |
|---------------------|--|-----------------|
| A – Service Kits | C – Retaining Glands | E – Accessories |
| B – Retaining Rings | D – Wear Rings - Metallic/Non-Metallic | |

Part Number	Description
A – Service Kits - Cotton duck and rubber material	
B14750-00938	9.38 Service Kit
B14750-00912	9.12 Service Kit
B14750-00825	8.25 Service Kit
B14750-00812	8.12 Service Kit
B14750-00800	8.00 Service Kit
B14750-00700	7.00 Service Kit
B14750-00600	6.00 Service Kit
B14750-00500	5.00 Service Kit
B14750-00400	4.00 Service Kit
B14750-00300	3.00 Service Kit
B – Retaining Rings	
B9971-00988	9.38 Retaining Ring
B9971-00970	9.12 Retaining Ring
B9971-00962	9.12 Retaining Ring
B9971-00900	8.25 Retaining Ring
B9971-00862	8.12 Retaining Ring
B9971-00850	8.00 Retaining Ring
B9971-00750	7.00 Retaining Ring
B9971-00650	6.00 Retaining Ring
B9971-00550	5.00 Retaining Ring
B9971-00450	4.00 Retaining Ring
B9971-00350	3.00 Retaining Ring

30000 Series – Service Parts, Continued (Manufactured after August 1, 1981)

Part Number	Description		Replaces
C – Retaining Gland Kits			
011-11002W00125	9.38 Retaining Gland Kit	10.75-12 Thread with K Wiper	A20599
011-10002W00125	9.12 Retaining Gland Kit	10.38-12 Thread with K Wiper	A22483
A22746	9.12 Retaining Gland	10.25-12 Thread	
A3534	8.25 Retaining Gland	9.88-12 Thread	
011-93002W00125	8.12 Retaining Gland Kit	9.31-12 Thread with K Wiper	A20558
011-91002W00125	8.00 Retaining Gland Kit	9.06-12 Thread with K Wiper	A22747
A20621	8.00 Retaining Gland	9.12-12 Thread (prior to 9-1-87)	
A3535	7.00 Retaining Gland	8.19-12 Thread (for 8.25 cyl's)	
011-79007W00125	7.00 Retaining Gland Kit	7.94-12 Thread with K Wiper	A2406
011-69005W00125	6.00 Retaining Gland Kit	6.94-12 Thread with K Wiper	A2215
011-59006W00125	5.00 Retaining Gland Kit	5.94-12 Thread with K Wiper	A2216
011-49007W00125	4.00 Retaining Gland Kit	4.94-12 Thread with K Wiper	A2217
011-39005W00125	3.00 Retaining Gland Kit	3.94-12 Thread with K Wiper	A2527

D – Wear Rings

B10723-00800 8.00 Wear Ring - Metallic

For other sizes of the above, See Series 70.

F – Accessories

ABV100 Automatic Bleeder Valve (for cylinders mfg. prior to 1-1-88)

ABV103 Automatic Bleeder Valve with SAE O-ring Seal (for cylinders mfg. after 1-1-88)

B13943 Adapter Automatic ABV100 to Manual Bleeder with O-ring and backup ring

B14701 Adapter Automatic ABV103 to Manual Bleeder with O-ring

RV101 Cylinder Pressure Protection Valve

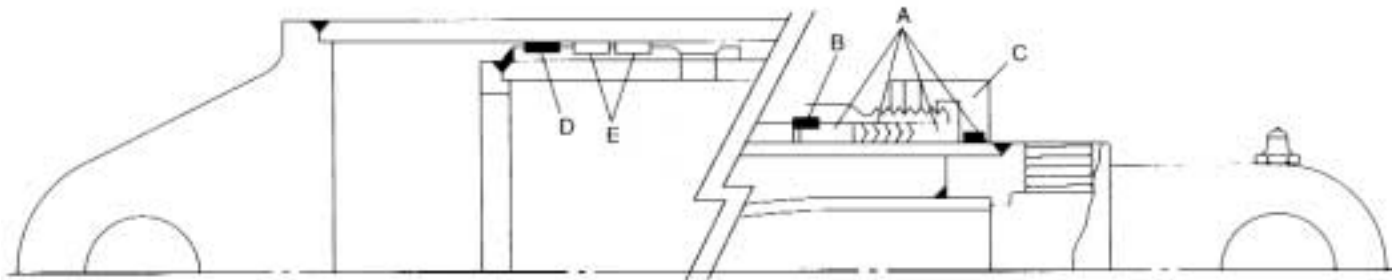
A2688 Manual Bleeder Valve

30000 Series – Service Parts (Manufactured prior to August 1, 1981)

Part Number	Description		Replaces
A – Service Kits (Including Wiper)			
034-00020-00938	9.38 Service Kit		A20855
034-00020-00912	9.12 Service Kit		A23352
A20857	8.25 Service Kit		
034-00020-00812	8.12 Service Kit		A20856
034-00020-00800	8.00 Service Kit		A20858
034-00020-00700	7.00 Service Kit		A20859
034-00020-00600	6.00 Service Kit		A20860
034-00020-00500	5.00 Service Kit		A20861
034-00020-00400	4.00 Service Kit		A20862
034-00020-00300	3.00 Service Kit		A20863

Note: 30000 series cylinder service kits for cylinders manufactured prior to August 1, 1981 can be used in 20000 series cylinders manufactured after January 1, 1997

20000 Series – Service Parts (Manufactured after January 1, 1997)



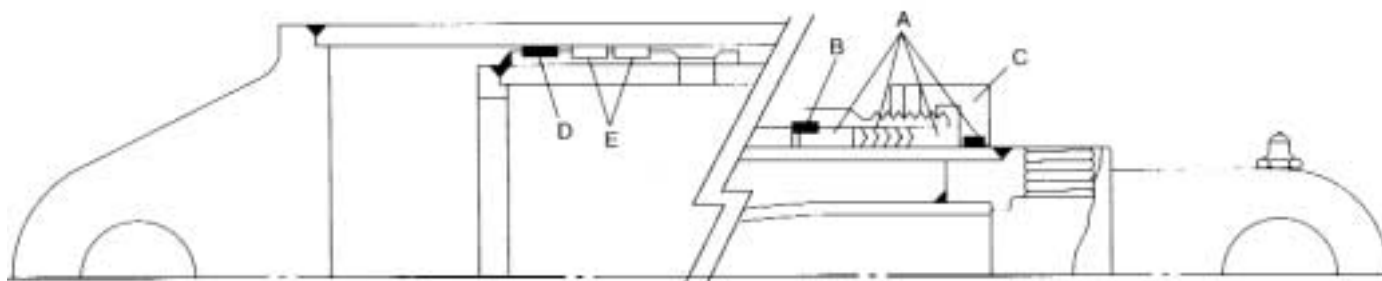
Items

A – Service Kits C – Retaining Glands E – Piston Rings
 B – Retaining Rings D – Wear Rings

Part Number	Description
A – * Service Kits	
034-00020-00938	9.38 Service Kit
034-00020-00912	9.12 Service Kit
034-00020-00812	8.12 Service Kit
034-00020-00800	8.00 Service Kit
034-00020-00700	7.00 Service Kit
034-00020-00600	6.00 Service Kit
034-00020-00500	5.00 Service Kit
034-00020-00400	4.00 Service Kit
034-00020-00300	3.00 Service Kit
B – Retaining Rings	
B9971-00970	9.12 Retaining Ring
For other sizes of the above, see 30000 Series.	
C – Retaining Glands - See Series 70. If Series 70 not available, refer to 30000 Series.	
D – Wear Rings (Non-metallic). See 30000 Series.	
E – Piston Rings	
B12071-00938	9.38 Piston Ring
B12071-00900	9.12 Piston Ring
B12071-00812	8.12 Piston Ring
B12071-00800	8.00 Piston Ring
B12071-00700	7.00 Piston Ring
B12071-00600	6.00 Piston Ring
B12071-00500	5.00 Piston Ring
B12071-00400	4.00 Piston Ring
B12071-00300	3.00 Piston Ring

* Service kit includes pack set, top and bottom guide rings, "K" series wiper and old style "AN" wiper.

20000 Series – Service Parts (Manufactured before January 1, 1997)



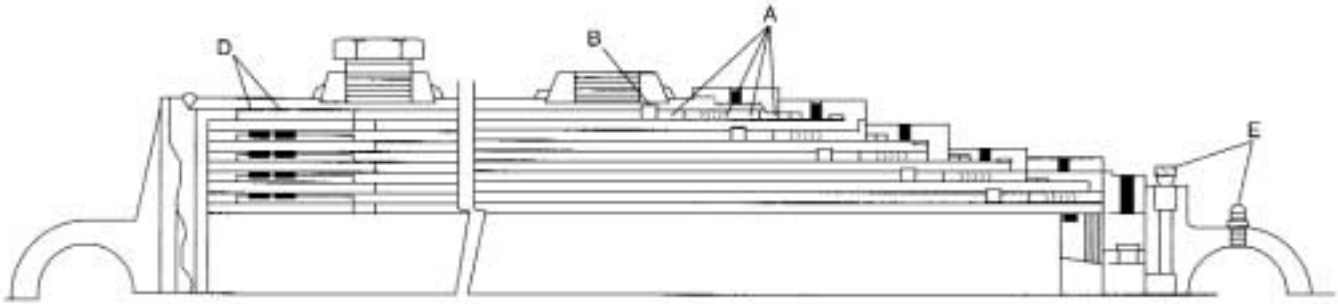
Items

A – Service Kits C – Retaining Glands E – Piston Rings
 B – Retaining Rings D – Wear Rings

Part Number	Description
A – ** Service Kits	
034-00021-00938	9.38 Service Kit
034-00021-00912	9.12 Service Kit
034-00021-00812	8.12 Service Kit
034-00021-00800	8.00 Service Kit
034-00021-00700	7.00 Service Kit
034-00021-00600	6.00 Service Kit
034-00021-00500	5.00 Service Kit
034-00021-00400	4.00 Service Kit
034-00021-00300	3.00 Service Kit
B – Retaining Rings - See 30000 Series.	
C – Retaining Glands - Included in Service Kit A	
D – Wear Rings (Non-metallic). See 30000 Series.	
E – Piston Rings	
B12071-00938	9.38 Piston Ring
B12071-00900	9.12 Piston Ring
B12071-00812	8.12 Piston Ring
B12071-00800	8.00 Piston Ring
B12071-00700	7.00 Piston Ring
B12071-00600	6.00 Piston Ring
B12071-00500	5.00 Piston Ring
B12071-00400	4.00 Piston Ring
B12071-00300	3.00 Piston Ring

** Service kit includes pack set, top and bottom guide rings, "K" series wiper and retaining gland.

10000 Series – Service Parts



Items

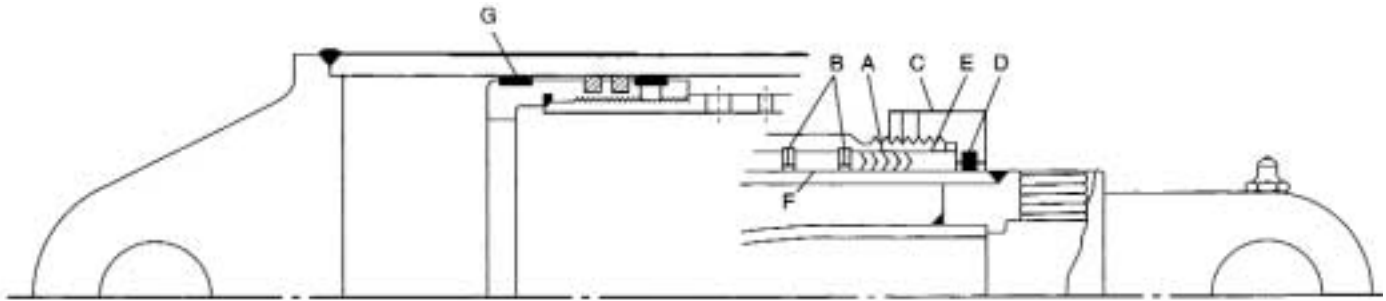
A – Pack Kits (includes wiper)

D – Wear Rings

B – Retaining Rings

E – Accessories

Part Number	Description
A – Pack Kits (including Wiper)	
B11426-00825	8.25 Pack Kit
B11426-00800	8.00 Pack Kit
B11426-00700	7.00 Pack Kit
B11426-00600	6.00 Pack Kit
B11426-00500	5.00 Pack Kit
B11426-00400	4.00 Pack Kit
B11426-00300	3.00 Pack Kit
B – Retaining Rings	
B9971-01050	9.75 Retaining Ring
For other sizes of the above item, refer to 30000 Series.	
D – Wear Rings. Refer to 30000 Series.	
E – Accessories. Refer to 30000 Series.	

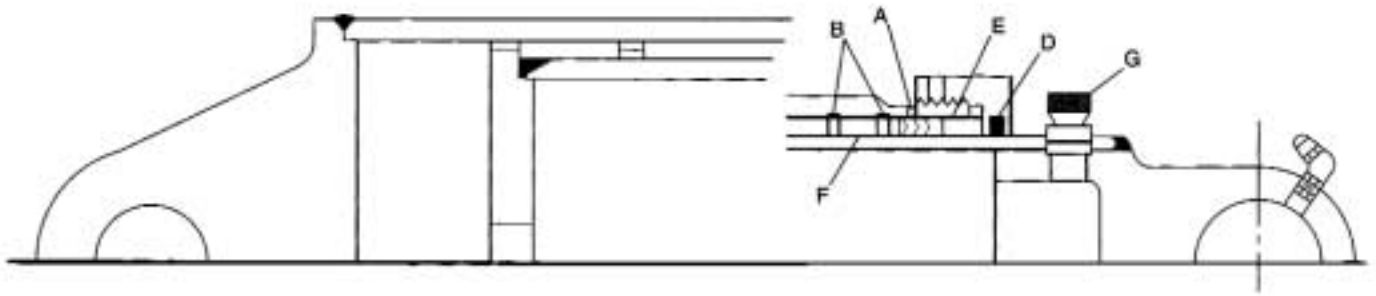


Items

A – Pack Sets C – Retaining Glands E – Upper Guide Rings G – Wear Rings
 B – Retaining Rings D – Wipers F – Lower Guide R

Part Number	Description
A – Pack Sets	
A18386	9.00 Pack Set
A3383	8.00 Pack Set
A3382	7.00 Pack Set
A3381	6.00 Pack Set
A2451	5.00 Pack Set
A3380	4.00 Pack Set
A3379	3.00 Pack Set
B – Retaining Rings (2 Required per sleeve)	
A18387	9.00 Retaining Ring
A3013	8.00 Retaining Ring
A3012	7.00 Retaining Ring
A2228	6.00 Retaining Ring
A17793	5.00 Retaining Ring
A17794	4.00 Retaining Ring
A2477	3.00 Retaining Ring
C – Retaining Gland Kits (Refer to 30000 Series)	
D – Wipers	
A18416	9.00 Wiper
A2925	8.00 Wiper
A2924	7.00 Wiper
A2923	6.00 Wiper
A2922	5.00 Wiper
A2921	4.00 Wiper
A2920	3.00 Wiper
E & F – Upper and Lower Guide Rings	
A18415	9.00 Guide Ring
B14454-00800	8.00 Guide Ring
B14454-00700	7.00 Guide Ring
B14454-00600	6.00 Guide Ring
B14454-00500	5.00 Guide Ring
B14454-00400	4.00 Guide Ring
B14454-00300	3.00 Guide Ring
G – Wear Rings	
B10764-00900	9.00 Wear Ring
B10764-00800	8.00 Wear Ring
B10764-00700	7.00 Wear Ring
B10764-00600	6.00 Wear Ring
B10764-00500	5.00 Wear Ring
B10764-00400	4.00 Wear Ring
B10764-00300	3.00 Wear Ring

900-2000 – Service Parts



Items

A – Pack Sets

B – Retaining Rings

D – Wipers

E – Upper Guide Rings

F – Lower Guide Rings

G – Accessories

Part Number	Description
A – Pack Sets	
A8248	9.75 Pack Set
A3441	8.25 Pack Set
For other sizes of the above item, see 9000 series.	
B – Retaining Rings	
A8246	9.75 Retaining Ring
A4616	8.25 Retaining Ring
For other sizes of the above item, see 9000 series.	
D – Wipers	
A8259	9.75 Wiper
A3439	8.25 Wiper
For other sizes of the above item, see 9000 series.	
E & F – Upper and Lower Guide Rings	
A8308	9.75 Upper Guide Ring
A3438	8.25 Upper Guide Ring
For other sizes of the above item, see 9000 series.	
G – Accessories	
A2688	Manual Air Bleeder Valve



Hyco International, Inc., Atlanta, Georgia, USA

Order Entry & Technical Assistance 1.800.544.0279

Hyco Alabama LLC
218 Arad Thompson Road
Arab, AL 35016
Tel: 256.586.8152
Fax: 256.586.2484

Other Hyco Facilities
Caxias do Sul, Brazil
Waterloo, Ontario, Canada
Hausach, Germany
Eschwege, Germany

Hyco Canada U.L.C.
1025 Route 161
St. Wenceslas, Québec G0Z 1J0
Tél: 819.224.4000
Fax: 819.224.4121